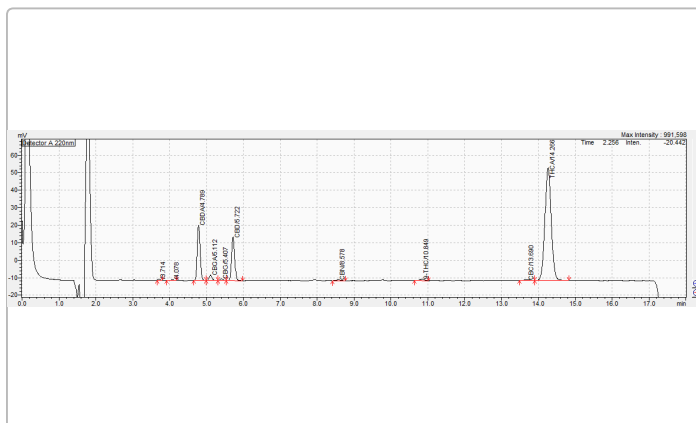


Torch Flames - Super Lemon Haze

Sample ID: HR20250191331
Strain: Torch Flames - Super Lemon Haze
Matrix: Plant
Type: Flower
Sample Size: ; Batch:

Produced:
Collected:
Received: 01/29/2025
Completed: 02/17/2025
Batch#:

Client



Summary

Test	Date Tested	Result
Batch		Complete
Cannabinoids	01/29/2025	Complete
Moisture	01/29/2025	11.33%

Cannabinoids

Complete

ND	8.65%	30.26%
Δ9-THC	Total CBD	Sum of Total Cannabinoids

Analyte	LOD mg/g	LOQ mg/g	Result %	Result mg/g
THCa	0.20000	0.61000	20.62	206.22
Δ9-THC	0.15000	0.45000	ND	ND
Δ8-THC	0.14000	0.42000	ND	ND
THCV	0.15000	0.44000	ND	ND
CBDa	0.10000	0.31000	4.45	44.51
CBD	0.15000	0.45000	4.75	47.49
CBN	0.16000	0.50000	ND	ND
CBGa	0.29000	0.88000	0.43	4.34
CBG	0.13000	0.39000	ND	ND
CBC	0.14000	0.42000	ND	ND
Total THC			18.09	180.85
Total CBD			8.65	86.53
Total			27.12	271.19
Sum of Cannabinoids			30.26	302.56

Determination of Cannabinoids by HPLC, HL223

Total THC = Δ9-THCa * 0.877 + Δ9-THC

Total CBD = CBDa * 0.877 + CBD

ND = Not Detected; NR = Not Reported; LOD = Limit of Detection; The reported result is based on a sample weight with the applicable moisture content for that sample; Unless otherwise stated all quality control samples performed within specifications established by the Laboratory. HL105.10-01. Cannabinoid Testing: Pass/Fail decision determined by Department of Cannabis Control CCR title 4 Division 19 §15724. Water activity testing: Pass/Fail decision determined by Department of Cannabis Control CCR title 4 Division 19 §15717.

Ming Li

Ming Li - General Manager
02/17/2025

ISO 17025 accredited by A2LA (Certificate No: 4074.01 & 4074.02). Sampling Procedure: SOP HL 110.2; Foreign Material: UV light/Microscope SOP HL 323, SOP HL 324; Water Activity: Water Activity Meter SOP HL 238; Moisture: Drying Oven SOP HL217.1; All LQC ran in accordance with 4 CCR sec. 15730. This product has been tested by Harrens Lab Inc. using valid testing methodologies and a quality system as required by state law. Values reported relate only to the product tested. Harrens Lab Inc. makes no claims as to the efficacy, safety or other risks associated with any detected or non-detected levels of any compounds reported herein. This Certificate shall not be reproduced except in full, without the written approval of Harrens Lab Inc.

Torch Flames - Fruit Punch

Sample ID: HR20250191332
Strain: Torch Flames - Fruit Punch
Matrix: Plant
Type: Flower
Sample Size: ; Batch:

Produced:
Collected:
Received: 01/29/2025
Completed: 02/17/2025
Batch#:

Client

Summary

Test	Date Tested	Result
Batch		Complete
Cannabinoids	01/29/2025	Complete
Moisture	01/29/2025	11.51%

Cannabinoids Complete

ND		9.46%		27.13%	
Δ9-THC		Total CBD		Sum of Total Cannabinoids	
Analyte	LOD	LOQ	Result	Result	
	mg/g	mg/g	%	mg/g	
THCa	0.20000	0.61000	16.62	166.24	<div></div>
Δ9-THC	0.15000	0.45000	ND	ND	
Δ8-THC	0.14000	0.42000	ND	ND	
THCV	0.15000	0.44000	ND	ND	
CBDa	0.10000	0.31000	4.95	49.54	<div></div>
CBD	0.15000	0.45000	5.11	51.14	<div></div>
CBN	0.16000	0.50000	ND	ND	
CBGa	0.29000	0.88000	0.43	4.34	<div></div>
CBG	0.13000	0.39000	ND	ND	
CBC	0.14000	0.42000	ND	ND	
Total THC			14.58	145.79	
Total CBD			9.46	94.59	
Total			24.42	244.19	
Sum of Cannabinoids			27.13	271.26	

Determination of Cannabinoids by HPLC, HL223
Total THC = Δ9-THCa * 0.877 + Δ9-THC
Total CBD = CBDa * 0.877 + CBD
ND = Not Detected; NR = Not Reported; LOD = Limit of Detection; The reported result is based on a sample weight with the applicable moisture content for that sample; Unless otherwise stated all quality control samples performed within specifications established by the Laboratory. HL105.10-01. Cannabinoid Testing: Pass/Fail decision determined by Department of Cannabis Control CCR title 4 Division 19 §15724. Water activity testing: Pass/Fail decision determined by Department of Cannabis Control CCR title 4 Division 19 §15717.

ISO 17025 accredited by A2LA (Certificate No: 4074.01 & 4074.02). Sampling Procedure: SOP HL 110.2; Foreign Material: UV light/Microscope SOP HL 323, SOP HL 324; Water Activity: Water Activity Meter SOP HL 238; Moisture: Drying Oven SOP HL 217.1; All LQC ran in accordance with 4 CCR sec. 15730. This product has been tested by Harrens Lab Inc. using valid testing methodologies and a quality system as required by state law. Values reported relate only to the product tested. Harrens Lab Inc. makes no claims as to the efficacy, safety or other risks associated with any detected or non-detected levels of any compounds reported herein. This Certificate shall not be reproduced except in full, without the written approval of Harrens Lab Inc.

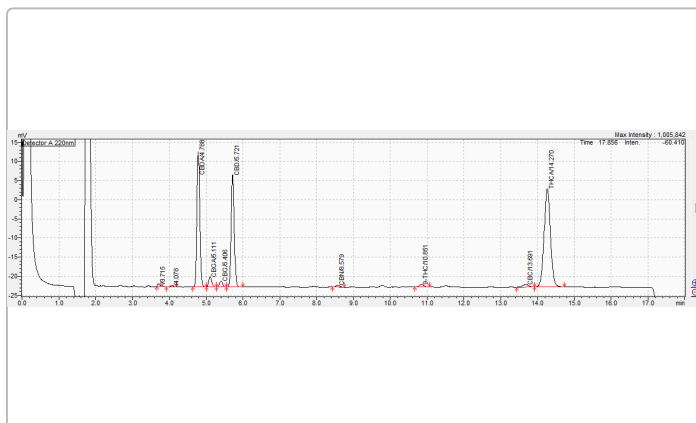
ISO 17025 accredited by A2LA (Certificate No: 4074.01 & 4074.02). Sampling Procedure: SOP HL 110.2; Foreign Material: UV light/Microscope SOP HL 323, SOP HL 324; Water Activity: Water Activity Meter SOP HL 238; Moisture: Drying Oven SOP HL 217.1; All LQC ran in accordance with 4 CCR sec. 15730. This product has been tested by Harrens Lab Inc. using valid testing methodologies and a quality system as required by state law. Values reported relate only to the product tested. Harrens Lab Inc. makes no claims as to the efficacy, safety or other risks associated with any detected or non-detected levels of any compounds reported herein. This Certificate shall not be reproduced except in full, without the written approval of Harrens Lab Inc.

Torch Flames - Berry Blue

Sample ID: HR20250191335
Strain: Torch Flames - Berry Blue
Matrix: Plant
Type: Flower
Sample Size: ; Batch:

Produced:
Collected:
Received: 01/29/2025
Completed: 02/17/2025
Batch#:

Client



Summary

Test	Date Tested	Result
Batch		Complete
Cannabinoids	01/29/2025	Complete
Moisture	01/29/2025	11.69%

Cannabinoids

Complete

ND	10.25%	19.81%
Δ9-THC	Total CBD	Sum of Total Cannabinoids

Analyte	LOD mg/g	LOQ mg/g	Result %	Result mg/g
THCa	0.20000	0.61000	8.53	85.33
Δ9-THC	0.15000	0.45000	ND	ND
Δ8-THC	0.14000	0.42000	ND	ND
THCV	0.15000	0.44000	ND	ND
CBDa	0.10000	0.31000	5.12	51.23
CBD	0.15000	0.45000	5.76	57.55
CBN	0.16000	0.50000	ND	ND
CBGa	0.29000	0.88000	0.40	3.98
CBG	0.13000	0.39000	ND	ND
CBC	0.14000	0.42000	ND	ND
Total THC			7.48	74.83
Total CBD			10.25	102.48
Total			18.08	180.80
Sum of Cannabinoids			19.81	198.09

Determination of Cannabinoids by HPLC, HL223

Total THC = Δ9-THCa * 0.877 + Δ9-THC

Total CBD = CBDa * 0.877 + CBD

ND = Not Detected; NR = Not Reported; LOD = Limit of Detection; The reported result is based on a sample weight with the applicable moisture content for that sample; Unless otherwise stated all quality control samples performed within specifications established by the Laboratory. HL105.10-01. Cannabinoid Testing: Pass/Fail decision determined by Department of Cannabis Control CCR title 4 Division 19 §15724. Water activity testing: Pass/Fail decision determined by Department of Cannabis Control CCR title 4 Division 19 §15717.

Ming Li

Ming Li - General Manager
02/17/2025

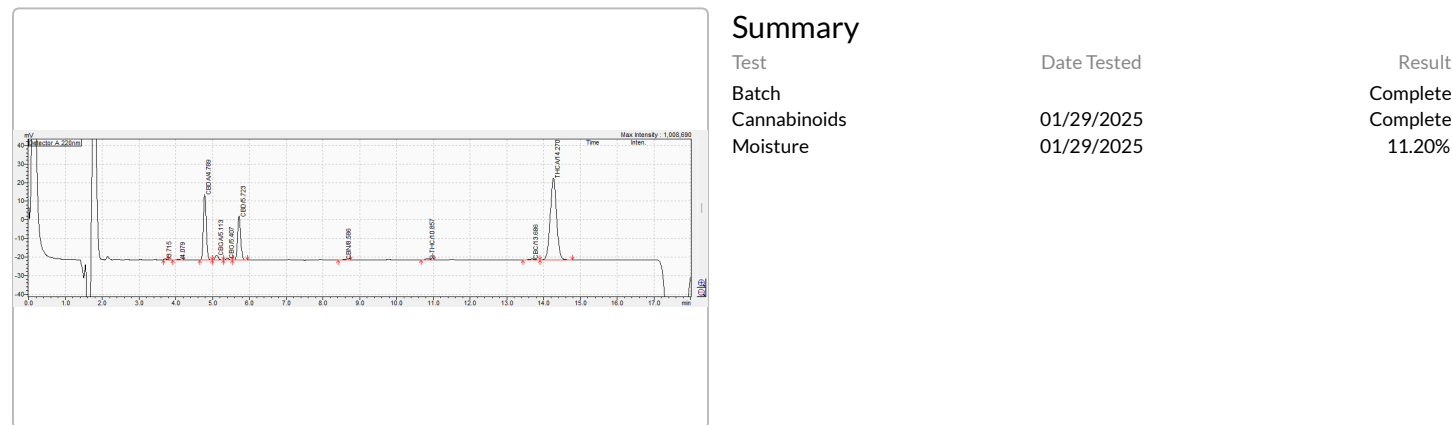
ISO 17025 accredited by A2LA (Certificate No: 4074.01 & 4074.02). Sampling Procedure: SOP HL 110.2; Foreign Material: UV light/Microscope SOP HL 323, SOP HL 324; Water Activity: Water Activity Meter SOP HL 238; Moisture: Drying Oven SOP HL217.1; All LQC ran in accordance with 4 CCR sec. 15730. This product has been tested by Harrens Lab Inc. using valid testing methodologies and a quality system as required by state law. Values reported relate only to the product tested. Harrens Lab Inc. makes no claims as to the efficacy, safety or other risks associated with any detected or non-detected levels of any compounds reported herein. This Certificate shall not be reproduced except in full, without the written approval of Harrens Lab Inc.

Torch Flames - Block - Berry

Sample ID: HR20250191336
Strain: Torch Flames - Block - Berry
Matrix: Plant
Type: Flower
Sample Size: ; Batch:

Produced:
Collected:
Received: 01/29/2025
Completed: 02/17/2025
Batch#:

Client



Cannabinoids Complete

ND		9.03%		24.53% [®]	
Δ9-THC		Total CBD		Sum of Total Cannabinoids	
Analyte	LOD mg/g	LOQ mg/g	Result %	Result mg/g	
THCa	0.20000	0.61000	14.48	144.77	<div></div>
Δ9-THC	0.15000	0.45000	ND	ND	
Δ8-THC	0.14000	0.42000	ND	ND	
THCV	0.15000	0.44000	ND	ND	
CBDa	0.10000	0.31000	5.07	50.73	<div></div>
CBD	0.15000	0.45000	4.58	45.78	<div></div>
CBN	0.16000	0.50000	ND	ND	
CBGa	0.29000	0.88000	0.40	4.03	<div></div>
CBG	0.13000	0.39000	ND	ND	
CBC	0.14000	0.42000	ND	ND	
Total THC			12.70	126.96	
Total CBD			9.03	90.27	
Total			22.08	220.77	
Sum of Cannabinoids			24.53	245.31	

Determination of Cannabinoids by HPLC, HL223
Total THC = Δ9-THCa * 0.877 + Δ9-THC
Total CBD = CBDa * 0.877 + CBD
ND = Not Detected; NR = Not Reported; LOD = Limit of Detection; The reported result is based on a sample weight with the applicable moisture content for that sample; Unless otherwise stated all quality control samples performed within specifications established by the Laboratory. HL105.10-01. Cannabinoid Testing: Pass/Fail decision determined by Department of Cannabis Control CCR title 4 Division 19 §15724. Water activity testing: Pass/Fail decision determined by Department of Cannabis Control CCR title 4 Division 19 §15717.

Ming Li

Ming Li - General Manager
02/17/2025

ISO 17025 accredited by A2LA (Certificate No: 4074.01 & 4074.02). Sampling Procedure: SOP HL 110.2; Foreign Material: UV light/Microscope SOP HL 323, SOP HL 324; Water Activity: Water Activity Meter SOP HL 238; Moisture: Drying Oven SOP HL217.1; All LQC ran in accordance with 4 CCR sec. 15730. This product has been tested by Harrens Lab Inc. using valid testing methodologies and a quality system as required by state law. Values reported relate only to the product tested. Harrens Lab Inc. makes no claims as to the efficacy, safety or other risks associated with any detected or non-detected levels of any compounds reported herein. This Certificate shall not be reproduced except in full, without the written approval of Harrens Lab Inc.